

# Patterns in Fishes

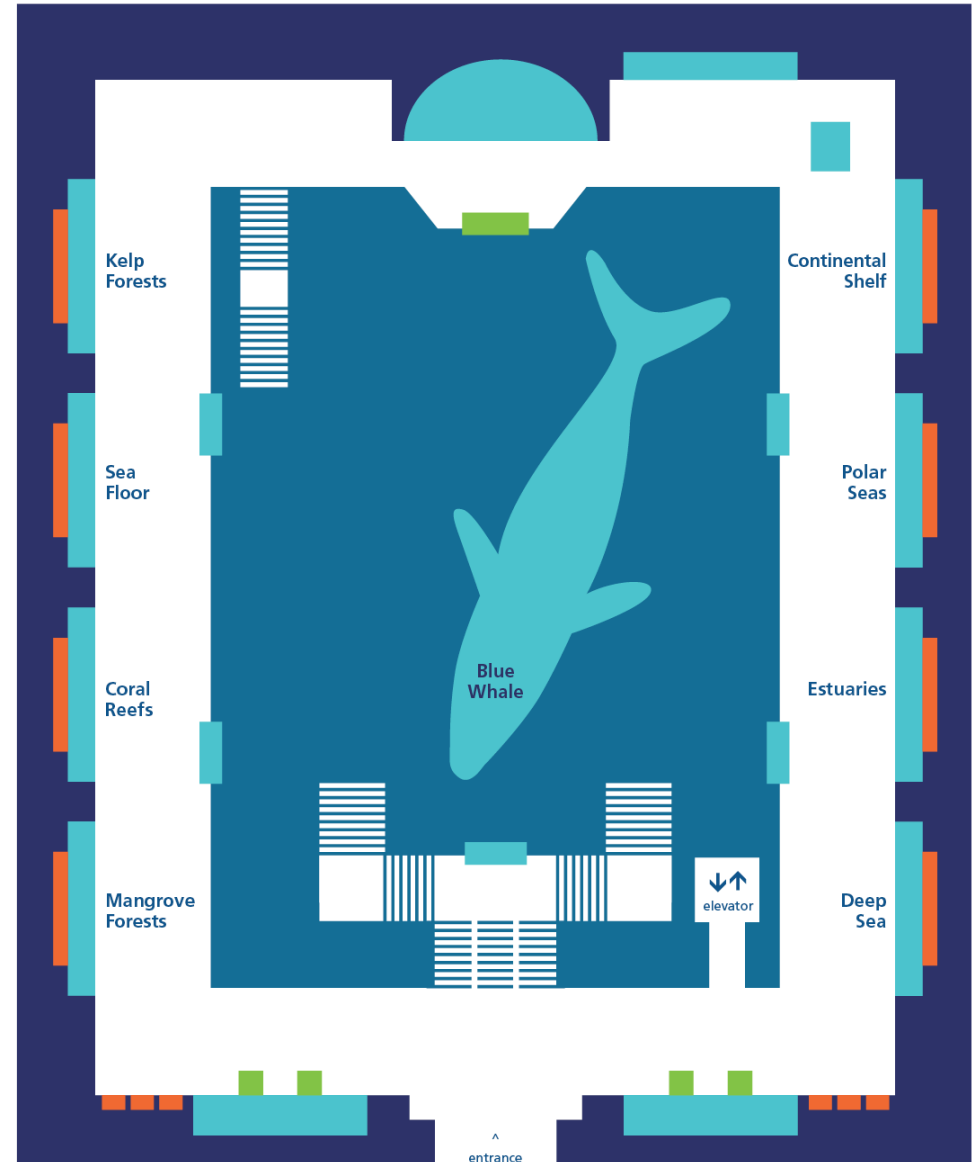
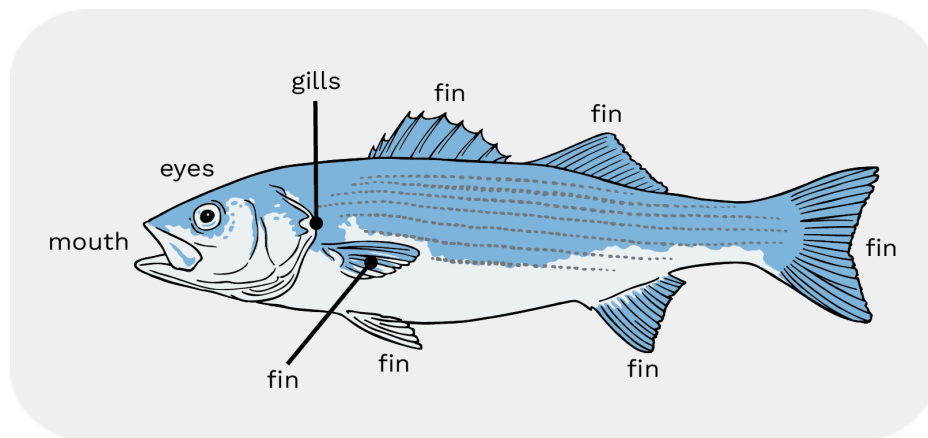
Welcome to the Milstein Hall of Ocean Life!

Many kinds of fish live in our oceans. And they live in many kinds of marine ecosystems.

Fishes can look very different. But they have similar body parts. Visit two ecosystem exhibits to explore two fishes. Find patterns of body parts they have in common.

## THINGS TO KNOW

- **MAP:** Use the map to help you find and pick two ecosystem exhibits. They are on the upper level of the hall.
- **FISH:** Use this picture to help you identify the body parts of each fish you sketch.



INSTRUCTIONS: **Pick 2 ecosystems** on the upper level of the hall. **Pick 1 fish** in each ecosystem. **Sketch** it and **label** its body parts.

**ECOSYSTEM #1**

- Continental Shelf     Deep Sea     Kelp Forests     Polar Seas
- Coral Reefs     Estuaries     Mangrove Forests     Sea Floor

Fish species name: \_\_\_\_\_



**Sketch** the fish. **Label** as many body parts as you can find (draw a line).

mouth	eyes	gills	fin

**ECOSYSTEM #2**

- Continental Shelf     Deep Sea     Kelp Forests     Polar Seas
- Coral Reefs     Estuaries     Mangrove Forests     Sea Floor

Fish species name: \_\_\_\_\_



**Sketch** the fish. **Label** as many body parts as you can find (draw a line).

mouth	eyes	gills	fin

**Circle** the fish's colors: red    pink    orange    yellow    green  
 blue    purple    brown    gray    black    white

**Circle** the fish's colors: red    pink    orange    yellow    green  
 blue    purple    brown    gray    black    white

z

# FIND THE PATTERNS

## 1. Compare the two fishes.

They live in two different marine ecosystems. But they might have traits in common.



**Talk about** the patterns of what the fishes have in common:

- Do the two fishes have any **colors** in common?
- Do the two fishes have any **body shapes** in common?
- Do the two fishes have any **body parts** in common?

## 2. Walk around the giant blue whale model. It looks like it's swimming above you in the open ocean!



**Sketch** the blue whale.

**Label** any body parts you can find.

mouth	eyes	blow hole	fin	tail fluke



**Compare** this mammal to the two fishes.

**Talk about** the patterns of what the fishes and the blue whale might have in common:

- Does the blue whale have any **colors** in common with the two fishes?
- Does the blue whale have any **body shapes** in common with the two fishes?
- Does the blue whale have any **body parts** in common with the two fishes?
- Does the blue whale have any body parts that are **different** from the two fishes?