

Patterns in Fishes

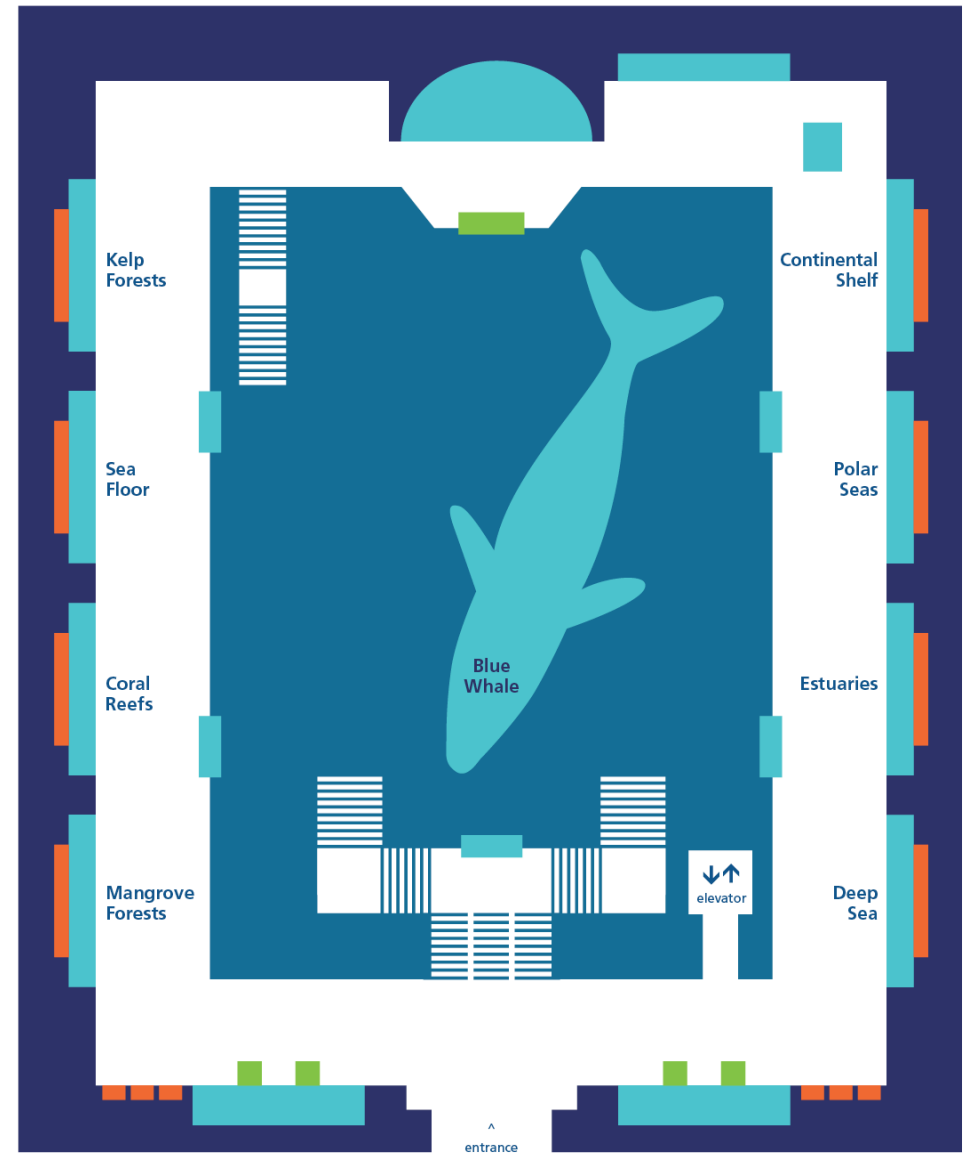
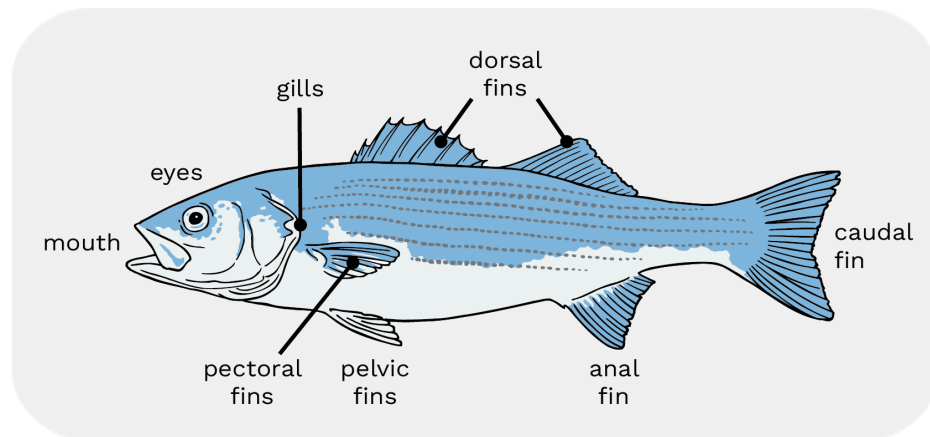
Welcome to the Milstein Hall of Ocean Life!

Many kinds of fish live in our oceans. And they live in many kinds of marine ecosystems.

Fishes can look very different, but they all share basic body parts. Visit three ecosystem exhibits to explore three fishes and find patterns of their shared traits.

THINGS TO KNOW

- **MAP:** Use the map to help you find and pick three ecosystem exhibits on the upper level of the hall.
- **FISH:** Use this picture to help you identify and label the body parts of each fish that you sketch.



INSTRUCTIONS: **Pick 3 ecosystems** on the upper level of the hall. **Pick 1 fish** in each ecosystem. **Sketch** it and **label** its body parts.

ECOSYSTEM #1

- Continental Shelf Deep Sea Kelp Forests Polar Seas
- Coral Reefs Estuaries Mangrove Forests Sea Floor

Fish species name: _____

Sketch the fish. Label as many body parts as you can find (draw a line).

| | | | |
|---------------|-------------|----------|-------------|
| mouth | eyes | gills | dorsal fins |
| pectoral fins | pelvic fins | anal fin | caudal fin |

Describe the fish's colors: _____

ECOSYSTEM #2

- Continental Shelf Deep Sea Kelp Forests Polar Seas
- Coral Reefs Estuaries Mangrove Forests Sea Floor

Fish species name: _____

Sketch the fish. Label as many body parts as you can find (draw a line).

| | | | |
|---------------|-------------|----------|-------------|
| mouth | eyes | gills | dorsal fins |
| pectoral fins | pelvic fins | anal fin | caudal fin |

Describe the fish's colors: _____

ECOSYSTEM #3

- Continental Shelf Deep Sea Kelp Forests Polar Seas
- Coral Reefs Estuaries Mangrove Forests Sea Floor

Fish species name: _____

Sketch the fish. Label as many body parts as you can find (draw a line).

| | | | |
|---------------|-------------|----------|-------------|
| mouth | eyes | gills | dorsal fins |
| | | | |
| pectoral fins | pelvic fins | anal fin | caudal fin |

Describe the fish's colors: _____

Find the Patterns

1. Compare the three fishes that live in the three marine ecosystems. Compare their colors, body shape, and body parts.

What patterns do you notice about the traits they have in common?

2. Walk around the giant blue whale model. It looks like it's swimming above you in the open ocean! Compare this mammal to the three fishes.

What traits does the blue whale have in common with the three fishes?

What traits does the blue whale have that the three fishes do not?

(For example: How many fins does the whale have compared to the fishes?)
